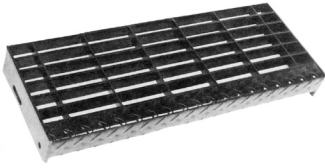


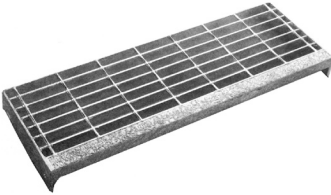
# STANDARD STAIR TREAD BOLTING PATTERN



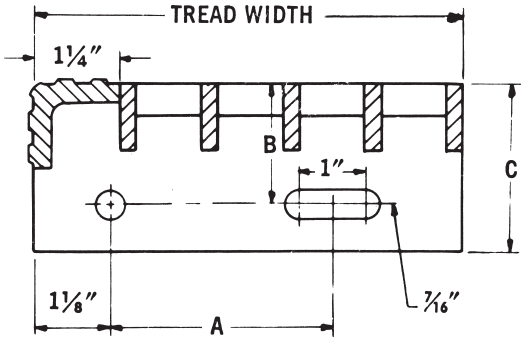
Checker Plate Nosing



MEBAC® Nosing



Aluminum Abrasive Nosing



Tread Width	No. Bearing Bars	A
5"	4	2-1/2"
6-3/16"	5	
7-3/8"	6	4-1/2"
8-9/16"	7	
9-3/4"	8	
10-15/16"	9	7"
12-1/8"		

Bearing Bar Size	3/4 x 3/16	1 x 3/16	1-1/4 X 3/16	1-1/2 2 X 3/16
Dimension B		1-3/4		2-1/4
Dimension C		2-1/2		3



## BAR GRATING STAIR TREADS

Type 19W4 carbon steel grating treads are stocked unpainted and galvanized. Other sizes and types of treads will be fabricated in our facility and shipped promptly. Available finishes – Unpainted, Painted, and Galvanized.

Bearing Bar	Depth	Length	Galvanized	Serrated
1 x 1/8	8-9/16"	2'0"		
1 x 3/16	8-9/16"	2'6"		
1 x 3/16	8-9/16"	3'0"		
1 x 3/16	9-3/4"	2'6"		
1 x 3/16	9-3/4"	2'6"		
1 x 3/16	9-3/4"	2'6"	X	
1 x 3/16	9-3/4"	3'0"		X
1 x 3/16	9-3/4"	3'0"		
1 x 3/16	10-15/16"	2'6"	X	X
1 x 3/16	10-15/16"	3'0"	X	X
1-1/4 x 3/16	9-3/4"	2'6"	X	X
1-1/4 x 3/16	9-3/4"	3'0"	X	X
1-1/4 x 3/16	10-15/16"	2'6"	X	X
1-1/4 x 3/16	10-15/16"	3'0"	X	X
1-1/4 x 3/16	12-1/8"	2'6"		
1-1/4 x 3/16	12-1/8"	3'0"	X	X

X – Indicates in stock in galvanized and serrated.

Stock treads have checker plate nosing.

Also available: aluminum abrasive and MEBAC® nosing.

Longer stair tread lengths available as special builds.

All treads fabricated to NAAMM standards.